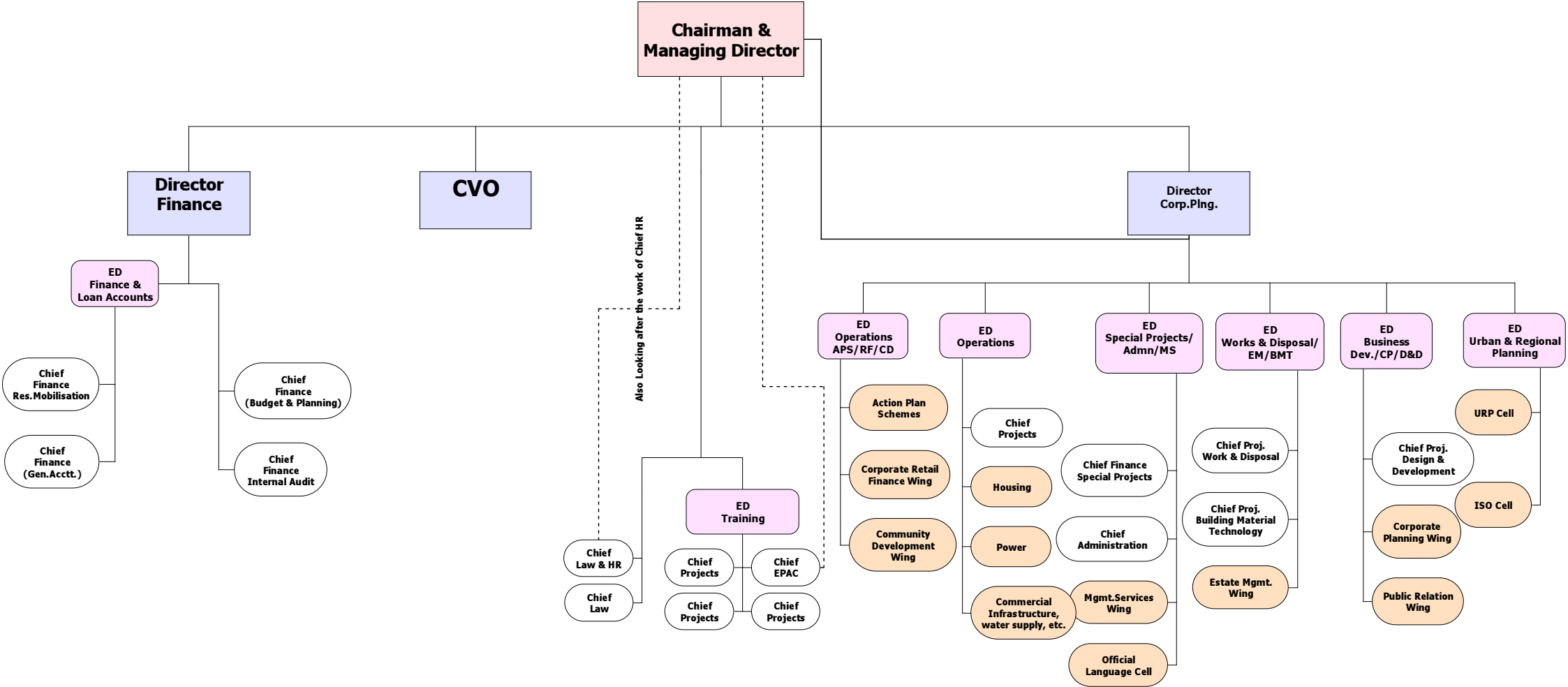
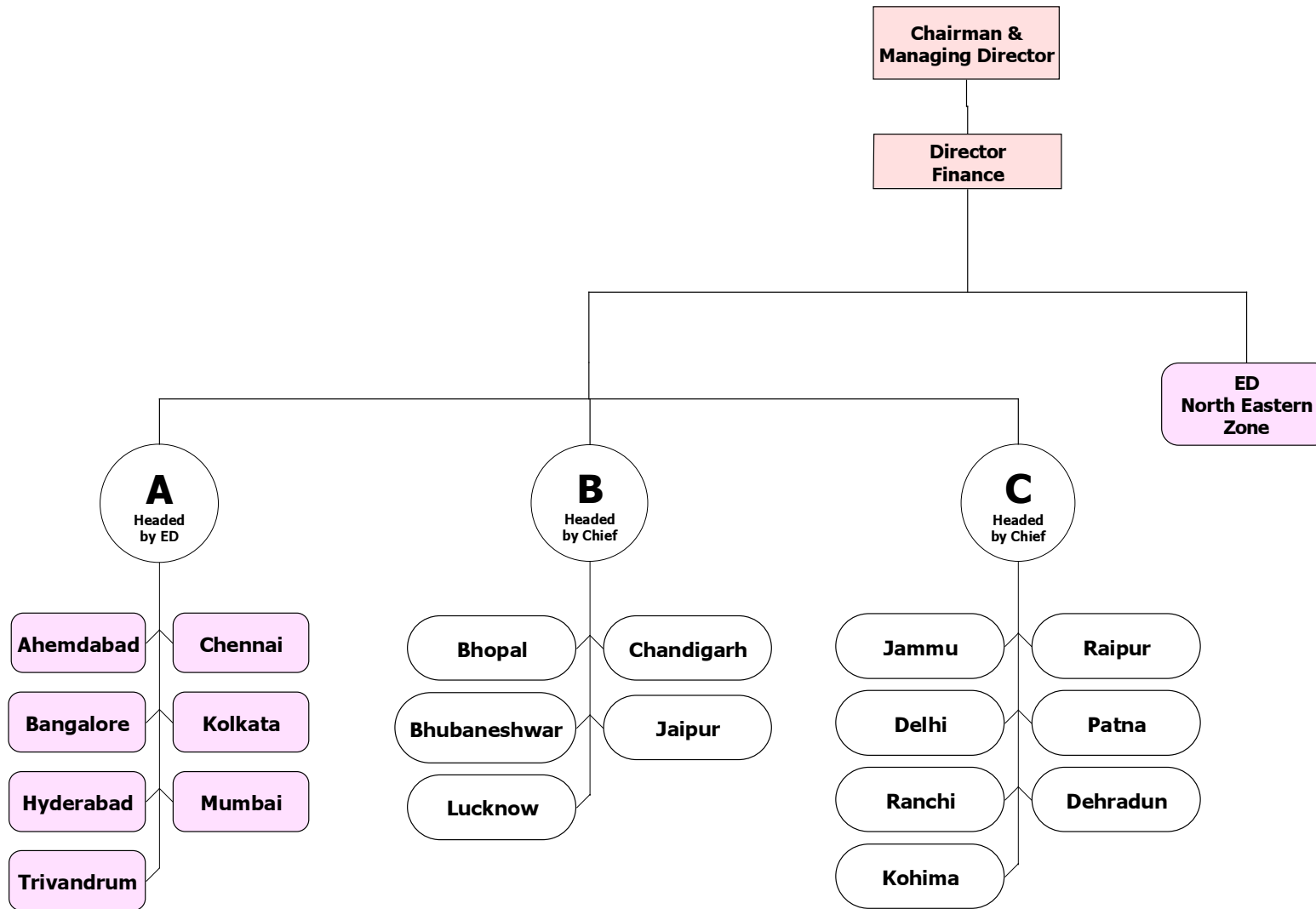


# Organisational Chart of HUDCO

## Corporate Office (Deployment)



# Organisational Chart of HUDCO Field Offices



**Allocation of Work relating to Default Resolution,  
Recovery & Release of Loans**

- ED(O-APS) - Over all Operational Activities
- ED(O-OAPS) - Operational Activities of Mumbai, Jaipur, Guwahati & Kohima
- ED(Cons.) - Chennai & Hyderabad
- ED(ARO) - Ahmedabad
- ED(W&D) - Chandigarh, Jammu, Kolkata & Bhubaneshwar
- ED(URP) - Trivandrum, Banagalore, Ranchi & Patna
- ED(SP) - Lucknow, Dehradun & NCR
- ED(BD) - Bhopal & Raipur

**Categorization of Regional Offices**

- A\*** Cummulative Outstanding Loan Amount more than Rs.1500 crores
- B** Cummulative Outstanding Loan Amount between Rs.1500 to Rs.500 crores
- C** Cummulative Outstanding Loan Amount less than Rs.500 crores